

**JOIN OUR CAMPUS!**

# ANGEL'S

## INTERNATIONAL UNIVERSITY



### Programs Offered:

- Arts & Humanities
- Business & Media
- Computer Science
- Engg & Tech
- Natural & Health Sciences
- Life & Earth Sciences
- Psychology
- Commerce

### Why Choose Us?

- Qualified lecturers
- Modern facilities
- Scholarships available
- Internship opportunities

## Get a Master's degree

Ordinary courses or by A.P.E.L  
(Accreditation Prior Experiential Learning)



## **ELEVATE YOUR CAREER WITH A MODERN MASTER'S DEGREE FROM ANGEL'S INTERNATIONAL UNIVERSITY**

Angel's International University is a premier distance learning institution serving a global student body. With 7 specialized faculties and nearly 200 study programs, our curriculum is precision-engineered to meet the diverse needs of adult learners—whether they are seeking leadership roles in industry and trade, advancing as independent professionals, or establishing themselves as corporate stakeholders.

At Angel's International University, we maintain a clear and forward-thinking vision. We believe that research, innovation, and unwavering professionalism are the essential pillars of every successful life and career project.

Through our A.P.E.L. (Accreditation of Prior Experiential Learning) validation system, we meticulously evaluate each student's unique profile. Our mission is to certify the expertise of our graduates, empowering them to become the next generation of global market leaders.

In an era where the job market operates on an unprecedented scale, we are dedicated to ensuring that every academic journey is backed by practical, strategic value tailored to the success of our students.

# THE STRATEGIC VISION OF AIU

The primary objective of Angel's International University is to fortify the professional and academic profiles of adult learners committed to advancing their careers, securing high-level roles, or launching innovative new projects.

Our student body is largely composed of established managers and qualified professionals. Our sophisticated distance learning system is specifically designed for this demographic, allowing candidates to earn a prestigious qualification without sacrificing their current professional responsibilities or precious time with their families.

We hold deep respect for the self-awareness and self-determination of our adult students. By engaging in a rigorous program that eliminates the need for physical campus attendance, our students demonstrate exceptional discipline, strengthen their self-esteem, and prove their capacity for independent achievement.

To support these diverse ambitions, Angel's International University has established seven specialized faculties and nearly 200 study programs. This extensive academic range ensures that every student can discover a personalized pathway to both professional success and personal fulfillment.

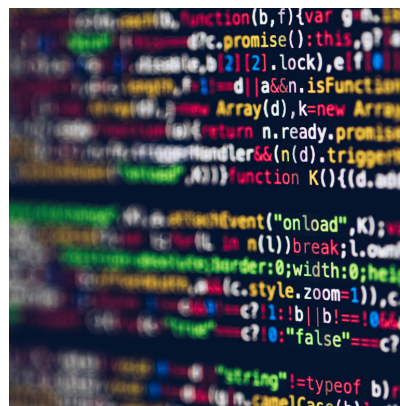
## FACULTIES AND STUDY PROGRAMS:



Arts & Humanities



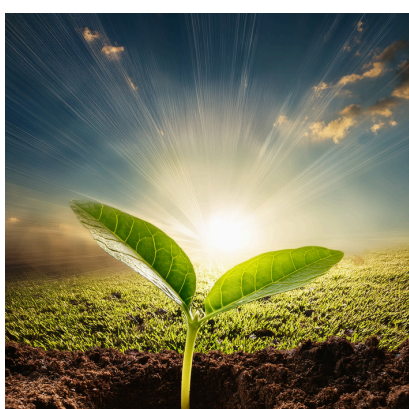
Business & Media



Computer Science



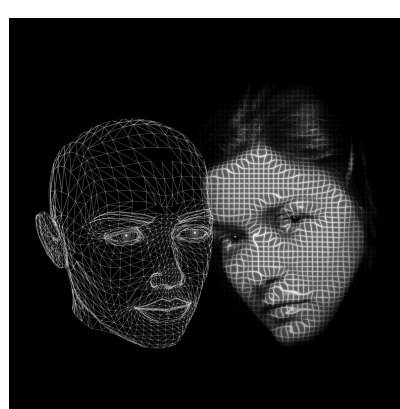
Engineering & Technology



Life & Earth Sciences



Natural & Health Science



Psychology



Commerce

## Faculty of Arts & Humanities



Advertising Creativity  
Ancient History  
Anthropology  
Archaeology  
Art History  
Artistic Design  
Audiovisual Communication  
Childhood & Special Education  
Community & Social Development  
Comparative Literature  
Creative Writing  
Education & Pedagogy  
Educational Administration  
Educational Technology  
ELT English Language Teaching  
English Literature  
Film Direction & Production Human Rights  
Humanities  
Institutional Relations  
Interior Design  
International Law  
International Relations  
Journalism  
Linguistics  
Military Strategy  
Multimedia Design  
Museology  
Mythology & Occultism  
Peace Studies  
Performing Arts  
Philosophy & Critical Thinking  
Political Science  
Public Affairs  
Religion  
Sociology  
Translation & Interpretation  
World History

## Faculty of Arts & Business & Media



Accounting  
Advertising & Media  
Bank Management  
Business & Economic Consulting  
Business Administration  
Catering & Restaurant Management  
Construction Management  
CSR Corporate Social Responsibility  
Econometrics  
Entrepreneurship & Innovation  
Entrepreneurship Management  
Environmental Management  
Executive Leadership  
Finance & Economics  
Financial Management  
Health Care Administration  
Hotel Management  
Human Resources  
International Business  
Logistics  
Maritime Port Management  
Marketing & Communication  
Mass Communication Management  
Natural Ecosystems Management  
Operations Management  
Organizational Communication  
Outdoor Recreation Management  
Petroleum Industry Management  
Project Engineering Management  
Protocol & Etiquette  
Public Health  
Public Policy & Administration  
Public Relations  
Real Estate  
Sales & Product Management  
Security & Emergency Management  
Special Events Management  
Sport Management  
Total Quality Management  
Tourism & Leisure Industry  
Tourism & Leisure Management

## Faculty of Computer Science



Artificial Intelligence Computation  
Engineering Computational  
Intelligence Computer Science  
Computer Systems & Networks  
E-Business & E-Commerce  
Information Technology  
Management Information Systems  
Software Engineering Systems  
Analysis & Design

## Faculty of Natural & Health Science



Anti-Aging Therapy  
Aromatherapy  
Ayurveda  
Bioenergetic Therapy  
Energy Healing  
Food Science  
Herbology & Phytotherapy  
Homeopathy  
Human Biology  
Iridology  
Kinesiology  
Manual Therapy & Massage  
Natural Beauty & Cosmetics  
Natural Health Science  
Naturopathy  
Nutrition & Diet Therapy  
Quantum Healing Therapy  
Regenerative Cellular Therapy  
Scientific Nutrition  
Sensory Therapy  
Sports Training  
TCM Traditional  
Chinese Medicine  
Toxicology  
Wellness & Health  
Yoga Therapy

## Faculty of Engineering & Technology



Aeronautical Technology  
Architecture & Architectural Design  
Automotive Technology  
Building Technology & Design  
Chemical Engineering  
Civil Engineering  
Electrical Engineering  
Electronics Engineering  
Energy Engineering  
Environmental Engineering  
Geotechnical Engineering  
Hydraulic Engineering  
Industrial Engineering  
Landscape Architecture  
Maintenance Engineering Management  
Materials Science Engineering  
Mechanical Engineering  
Mechatronic Engineering  
Military Engineering  
Mining Engineering  
Occupational Safety & Health  
Petroleum & Natural Gas Engineering  
Petroleum & Natural Gas Production  
Process Instrumentation Technology  
R & D Research & Development  
Renewable Energies  
Robotics & Automation  
Structural Engineering  
Sustainable Architecture  
Technological Management  
Telecommunication Engineering  
Urban Planning & Design

## Faculty of Life & Earth Sciences



Astronomy  
Biochemistry  
Biology & Life Science  
Botany & Plant Science  
Chemistry  
Earth Science  
Ecology  
Environmental Health  
Ethology  
Fire Science  
Forestry  
Genetics  
Geography & Cartography  
Geology  
Human Animal Studies  
Livestock & Animal Science  
Marine Science  
Mathematics  
Meteorology  
Microbiology & Immunology  
Molecular Cell Biology  
Optics  
Physics  
Pure Sciences  
Soil Science  
Statistics  
Sustainable Agriculture  
Wood Science  
Zoology



## Faculty of Psychology

Addictive Behavior  
Animal Assisted Therapy  
Clinical Psychology  
Coaching & Leadership  
Cognitive Psychology  
Counseling Psychology  
Criminology  
General Psychology  
Gestalt Therapy  
Holistic Integral Therapy  
Hypnotherapy  
Neural & Brain Science  
NLP Neuro Linguistic Programming  
Organizational Psychology  
Parapsychology  
Personal Growth Techniques  
Psychosomatic Therapy  
Psychotherapy  
Sexology  
Social Psychology  
Social Work  
Soul Therapy  
Transpersonal Psychology

## Faculty of Physical Education



Research Methodology  
Sports Training  
Sports Psychology  
Yoga and Fitness  
Communication, Technology & Modern Teaching  
Area of Research  
Advanced Statistics  
Elective: Sports Training,  
Sports Psychology, Yoga and Fitness  
Exercise Physiology and Sports Medicine  
Sports Biomechanics  
Sports Psychology and Sociology  
Research and Statistics  
in Physical Education

## Faculty of Hindi



**Hindi Literature and Language:**  
Poetry, drama, fiction, and criticism

**Research Methodology:**  
Research design, data collection, data  
analysis

**Electives:** Hindi drama, Hindi fiction, Hindi  
poetry

**Specialization:** Literary Criticism, Medieval  
Poetry, Journalism and Media, Women  
Studies, Dalit Literature, Comparative  
Literature

## Faculty of Commerce



Organisational Behaviour  
and Management Process  
Management and Financial Accounting  
Marketing Management  
Computer Applications in Commerce  
Income Tax Law and Accounts  
Business Environment & Policy  
Research Methodology in Commerce  
Management of Non-Profit Organisations  
Corporate Laws  
Managerial Accounting  
Marketing Management  
Quantitative Decision-Making Models  
Corporate Governance  
Financial Management  
Strategic Management  
Managerial Communication  
International Trade- Theory & Practice  
Goods and Service Tax (GST)  
Income Tax Elements  
E-Commerce  
Mergers & Acquisitions  
Quantitative Techniques  
International Business  
Advertising & Sales Management  
Project / Dissertation



## **THE PATHWAY TO YOUR MASTER'S DEGREE AT ANGEL INTERNATIONAL UNIVERSITY**

At Angel's International University, a Master's degree requires 40 credits (80 ECTS) beyond the Bachelor's level. We offer two pathways: the Standard Procedure (full coursework) and the A.P.E.L. Assessment, which credits your professional experience toward your degree. If your A.P.E.L. validation reaches 25 credits, you may proceed directly to the final thesis.

Whether you pursue a Master of Arts (M.A.) or a Master of Science (M.Sc.), our flexible distance learning model replaces traditional exams with textbook-based Unit Reports. This advanced specialization serves as a powerful career springboard or a bridge to PhD programs, concluding with a mandatory final thesis of at least 60 pages.

Our innovative pedagogical approach is specifically designed to value the practical skills you have already acquired in the workplace. By integrating your professional background into our academic framework, we ensure that your degree is not just a credential, but a true reflection of your expertise and a strategic asset for your future global leadership roles.

## PROSPECTIVE CANDIDATES & ADMISSION STANDARDS

At Angel's International University, we offer specialized, non-regulated Master's programs designed for established professionals, entrepreneurs, and high-level managers. Admission is based on a rigorous, independent evaluation of your professional history and CV rather than specific national frameworks.

While our private degrees are focused on career advancement rather than government-regulated roles, they are held to the highest standards of integrity. Before enrollment, every candidate undergoes a comprehensive skills verification to ensure their degree directly reflects their professional expertise and provides a reliable guarantee of leadership capability to global employers.

## PROGRAM TUITION & SPECIAL ENROLLMENT

At Angel's International University, we are committed to making high-quality, global education accessible to working professionals worldwide. We offer a transparent fee structure designed to provide maximum value for your professional investment.

- **Standard Tuition: \$3,400**
- **Special Discount Cost: \$1,200 (Total Cost)**

### Enrollment Procedures: Your Path to Angel's International University

To apply for a Master's program at Angel's International University, please complete the official Application Form, clearly specifying your desired degree and academic major (e.g., Master of Science in Psychology or Master of Arts in History).

#### Eligibility and Requirements:

- **Age Requirement:** Applicants must be at least 20 years of age at the time of application.
- **Documentation:** Along with your application, you must submit a comprehensive CV, a recent passport-sized photograph, and a clear copy of your government-issued ID or passport.

Upon the successful review of your credentials, our Admissions Office will issue your Official Certificate of Enrollment and a detailed payment schedule based on your selected program and financial plan.



## ACCREDITATION AND PROFESSIONAL RECOGNITION

At Angel's International University, we maintain a transparent approach to accreditation. Our validation process is non-governmental and discretionary, a common standard for international distance education institutions. Like many prestigious private universities, we seek accreditation through specialized professional and regional associations.

Currently, there are no universal, worldwide accreditation standards for distance learning. Each accrediting body performs an independent, comprehensive assessment and grants accreditation based on its specific rigorous criteria.

### **The Utility of Your Degree**

An Angel's International University degree is a powerful tool for career advancement, providing access to a wide range of professional opportunities and global roles. However, it is important to note that certain regulated professions or government-specific positions may require diplomas from state-accredited institutions. We encourage all prospective students to verify the specific requirements for their intended career path and country before enrolling.

### **Expertise Over Credentials**

In the modern professional landscape, reputation is built on tangible skills and competency. While a degree serves as a formal representation of your achievement, employers today place the highest value on your actual knowledge and expertise. For most multinational companies, NGOs, and private employers, completing a rigorous distance learning program demonstrates the level of discipline and self-management they desire in top-tier candidates.

## ACCREDITATION EXCELLENCE: ANGEL INTERNATIONAL UNIVERSITY IS ACCREDITED BY THE IACU (International Association of Colleges & Universities)

Angel's International University is globally accredited by the **International Association of Colleges & Universities (IACU)**. This accreditation was granted following a rigorous review and validation of our study programs to ensure they meet high international standards.

The IACU evaluates several key benchmarks, including:

- Curriculum Quality: Assessment of program depth and academic rigor.
- Professional Relevance: Alignment of degree titles with global career development.
- Institutional Integrity: Verification of faculty expertise and operational transparency.

By meeting these stringent criteria, Angel's International University ensures its distance education programs provide a high-quality, professional credential respected by private and international bodies worldwide.



# MASTER CERTIFICATION SAMPLE



**ANGEL'S**  
INTERNATIONAL UNIVERSITY  
BE THE BEST VERSION OF YOURSELF

## Angel's International University

This is to certify that, upon the recommendation of  
the Faculty and by the authority vested in them,  
the Directors of Angel's International University  
hereby confer

### Your Name

The degree of  
**Master of Arts**  
in Philosophy

With all the rights, privileges and Honors thereto appertaining  
In witness whereof, we have caused this document to be issued  
under the official seal of the university and signed by the  
authorized officer in India

**Dr. Rishikesh Tewari**  
President & Chief Academic Officer

**Registrar**  
AM



# MASTER TRANSCRIPT SAMPLE

## Angel's International University



### Official Transcript

#### THE AIU GRADING SYSTEM

To earn any AIU credits a grade of E (2.0-50%) or higher is required

- A 4.0 - Excellent (91-99%)
- B 3.5 - Very Good (81-90%)
- C 3.0 - Good (71-80%)
- D 2.5 - Satisfactory (61-70%)
- E 2.0 - Sufficient (51-60%)
- F 1.5 Fail (<50%)

ACADEMIC YEAR 2021/2022  
MARCH, 25 2022

Registration Code:

#### SOURCES OF AIU CREDITS:

\*PR.ED Code Credits: Transferred from documented previous education  
\*APEL Code Credits: Accreditation of prior experiential learning

- 001 = General Educational courses
- 002 = Specific Educational
- 003 = Bachelor's Specialist & Expert
- 004 = Bachelor's courses
- 005 = Master's courses
- 006 = Master's & Doctorate courses
- 007 = Doctorate courses
- 008 = Thesis

1 AIU CREDIT = 1 USA Semester Credit  
= 15 hours of notional learning  
= 30 hours of study or working  
1 AIU CREDIT = 2 ECTS Credits

Name:

Nationality:

Birth Date:

Degree	Major / Minor	Graduation Date
Master of Science	Trichology	March,25 2022

### Faculty of Natural Health Science

#### TRICHOLOGY

DEGREE CREDITS **120** ECTS Equivalent **240**

Undergraduate: **120** +Postgraduate **00** AIU Credits **120** Grade Point Average **4.05**  
APEL Credits: **90** Academic Credits **30** Accumulated **120**

Approval Thesis Date	CIC	Bachelor Program	Academic Credits	Grade
	APEL	Examination Units validated by APEL max (Accreditation Prior Experiential Credits)	90	
		<b>Academic Assessment of Final Dissertation</b>		
28/02/2026	008	Final Dissertation (Thesis): title		
		<ul style="list-style-type: none"> <li>• Candidate's contribution to the research</li> <li>• Formulation and motivation of the research problem</li> <li>• Research structure</li> <li>• Research methodology</li> <li>• Scientific, social and practical relevance of research</li> <li>• Field of research, knowledge and use of literature</li> <li>• Consistency, stylistic and linguistic form of presentation</li> <li>• Scientific relevance of research results</li> </ul>	2 2 2 3 4 4 6 7	4.0 3.8 3.8 3.8 3.9 4.0 3.8 3.9
		Total Credits	120	

President & Chief Academic Officer

Registrar AIU