

JOIN OUR CAMPUS!

ANGEL'S INTERNATIONAL UNIVERSITY



Programs Offered:

- Arts & Humanities
- Business & Media
- Computer Science
- Engg & Tech
- Natural & Health Sciences
- Life & Earth Sciences
- Psychology
- Commerce

Why Choose Us?

- Qualified lecturers
- Modern facilities
- Scholarships available
- Internship opportunities

Get a Post PhD. degree

Ordinary courses or by A.P.E.L
(Accreditation Prior Experiential Learning)



POSTDOCTORAL RESEARCH DEGREE

(Minimum 30 credits beyond the doctoral level)

Angel's International University (AIU) offers an advanced Postdoctoral program designed for global scholars. Study entirely in English through an accelerated and flexible online framework. This program is specifically tailored for working professionals and researchers who require a high-level academic environment without the constraints of a traditional physical classroom.

By completing your studies at AIU, you obtain a prestigious international degree, backed by our commitment to academic excellence and authenticated according to international educational standards.

Entry Requirements

- **Academic Foundation:** Must have successfully completed and approved PhD or equivalent doctoral studies.
- **Professional Background:** Work experience in research, high-level industry, or university-level teaching is considered a significant advantage, and candidates must be aged 25 or above.
- **Documentation:** For a detailed breakdown of specific submission requirements, please refer to the detailed description on this page.



ONLINE LEARNING MODEL & METHODOLOGY

Our curricula are managed entirely online through a sophisticated e-learning platform, allowing admitted students to conduct their research from their country of residence.

- **Digital Integration:** The program provides a combination of delivery mechanisms for online learning models that familiarize the student with the internet environment and advanced digital tools.
- **Experiential Focus:** We place an important emphasis on experiential learning, with a high percentage of independent, hands-on research.
- **Skill Mastery:** The program aims to perfect all aspects of university study and research. It teaches students to gain hands-on experience with case files and develop excellence in communication, academic writing, and conducting research in their field.
- **Core Specialization:** The focus remains on the theory and practice of the core aspects of postdoctoral specialization while handling cases in areas closely related to the discipline.

THE VALUE OF POSTDOCTORAL RESEARCH AT AIU

Staying at the top of a line of research and following global trends is not only a necessity but a critical need for those holding a Doctorate. AIU promotes high-level training to increase your demand in the academic, professional, and institutional markets.

Research Objective: Postdoctoral research is academic or scientific research carried out by those who have completed their doctoral studies. The goal is to deepen specialized knowledge following a line of doctoral work or a related field. At AIU, the production of high-quality publications is expected and considered essential to the academic mission.

Prequalification & Application

For free prequalification, we invite you to submit your comprehensive academic portfolio, including your updated resume, doctoral diplomas, and relevant employment certificates, directly to our admissions office. Our review board carefully evaluates these documents to assess your research potential and alignment with our advanced academic standards.

You can initiate this process by mailing your documentation to us at aiu.apply@gmail.com or, you may submit your application directly at AIU's Website. By choosing any of these channels, you take the definitive step toward elevating your academic career and joining a prestigious community of global researchers at Angel's International University.



POSTDOCTORAL PROGRAM DESCRIPTION

The Postdoctoral program at Angel's International University (AIU) is fundamentally built upon the principles of rigorous independent research. Each assigned course within the curriculum requires the submission of a comprehensive 35-page Final Report, which must be entirely original and strictly adhere to the university's prescribed formatting standards. The culmination of the program is the Postdoctoral Thesis, a substantial work of 90 to 100 pages that must undergo evaluation and approval by our distinguished Academic Staff. Furthermore, as a hallmark of scholarly contribution, candidates are required to publish at least one research paper in a recognized scientific journal or within the university's own academic publication. To ensure a well-rounded expertise, candidates must master fundamental experiences within their field to develop extracurricular practices that complement each course. All these academic activities are conducted entirely online through our digital infrastructure.

In accordance with our current academic regulations, participants enrolled in any of our postdoctoral tracks will be formally recognized as a "Postdoctoral Researcher" throughout the duration of their training and research period at AIU. Upon the successful completion and passage of the Academic Program, the university awards the official degree, consisting of a Diploma and Transcript issued in English.

Curriculum Structure & Academic Requirements

Enrollment in this program requires the prior completion of a doctoral degree and a demonstrated aptitude for high-level postdoctoral research. The program is meticulously coordinated by the AIU Academic Staff and is structured around a set of four (4) advanced research courses and the final Postdoctoral Thesis.

The general composition of the Postdoctorate is based on a 30-credit framework, organized as follows:

- Study Plan (20 Credits): Four specialized courses, each valued at 5 credits.
- Research Component (10 Credits): Dedicated to research methodology, the initial project, and the final thesis execution.

Program Duration

The standard duration for the program is fourteen (14) months. This timeline typically allocates two months for each of the four research courses and a minimum of six months for the focused development of the Postdoctoral Thesis. However, we offer a flexible approach; the total duration may be reduced depending on the student's individual dedication and pace of study.

Additionally, the required period may be further reduced through the validation of credits if the student has previously completed approved postdoctoral studies at another recognized university. Please note that all credit transfers are subject to formal verification and specific institutional restrictions.

THE STRATEGIC VISION OF AIU

The primary objective of Angel's International University is to fortify the professional and academic profiles of adult learners committed to advancing their careers, securing high-level roles, or launching innovative new projects.

Our student body is largely composed of established managers and qualified professionals. Our sophisticated distance learning system is specifically designed for this demographic, allowing candidates to earn a prestigious qualification without sacrificing their current professional responsibilities or precious time with their families.

We hold deep respect for the self-awareness and self-determination of our adult students. By engaging in a rigorous program that eliminates the need for physical campus attendance, our students demonstrate exceptional discipline, strengthen their self-esteem, and prove their capacity for independent achievement.

To support these diverse ambitions, Angel's International University has established seven specialized faculties and nearly 200 study programs. This extensive academic range ensures that every student can discover a personalized pathway to both professional success and personal fulfillment.

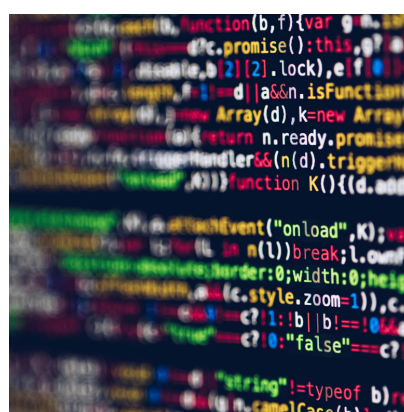
FACULTIES AND STUDY PROGRAMS:



Arts & Humanities



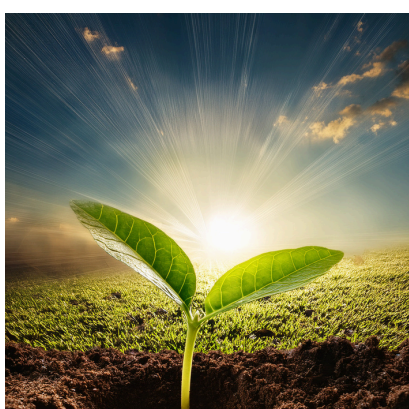
Business & Media



Computer Science



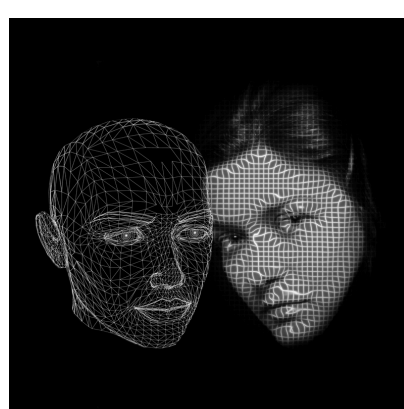
Engineering & Technology



Life & Earth Sciences



Natural & Health Science



Psychology



Commerce

Faculty of Arts & Humanities



Advertising Creativity
Ancient History
Anthropology
Archaeology
Art History
Artistic Design
Audiovisual Communication
Childhood & Special Education
Community & Social Development
Comparative Literature
Creative Writing
Education & Pedagogy
Educational Administration
Educational Technology
ELT English Language Teaching
English Literature
Film Direction & Production Human Rights
Humanities
Institutional Relations
Interior Design
International Law
International Relations
Journalism
Linguistics
Military Strategy
Multimedia Design
Museology
Mythology & Occultism
Peace Studies
Performing Arts
Philosophy & Critical Thinking
Political Science
Public Affairs
Religion
Sociology
Translation & Interpretation
World History

Faculty of Arts & Business & Media



Accounting
Advertising & Media
Bank Management
Business & Economic Consulting
Business Administration
Catering & Restaurant Management
Construction Management
CSR Corporate Social Responsibility
Econometrics
Entrepreneurship & Innovation
Entrepreneurship Management
Environmental Management
Executive Leadership
Finance & Economics
Financial Management
Health Care Administration
Hotel Management
Human Resources
International Business
Logistics
Maritime Port Management
Marketing & Communication
Mass Communication Management
Natural Ecosystems Management
Operations Management
Organizational Communication
Outdoor Recreation Management
Petroleum Industry Management
Project Engineering Management
Protocol & Etiquette
Public Health
Public Policy & Administration
Public Relations
Real Estate
Sales & Product Management
Security & Emergency Management
Special Events Management
Sport Management
Total Quality Management
Tourism & Leisure Industry
Tourism & Leisure Management

Faculty of Computer Science



Artificial Intelligence Computation
Engineering Computational
Intelligence Computer Science
Computer Systems & Networks
E-Business & E-Commerce
Information Technology
Management Information Systems
Software Engineering Systems
Analysis & Design

Faculty of Natural & Health Science



Anti-Aging Therapy
Aromatherapy
Ayurveda
Bioenergetic Therapy
Energy Healing
Food Science
Herbology & Phytotherapy
Homeopathy
Human Biology
Iridology
Kinesiology
Manual Therapy & Massage
Natural Beauty & Cosmetics
Natural Health Science
Naturopathy
Nutrition & Diet Therapy
Quantum Healing Therapy
Regenerative Cellular Therapy
Scientific Nutrition
Sensory Therapy
Sports Training
TCM Traditional
Chinese Medicine
Toxicology
Wellness & Health
Yoga Therapy

Faculty of Engineering & Technology



Aeronautical Technology
Architecture & Architectural Design
Automotive Technology
Building Technology & Design
Chemical Engineering
Civil Engineering
Electrical Engineering
Electronics Engineering
Energy Engineering
Environmental Engineering
Geotechnical Engineering
Hydraulic Engineering
Industrial Engineering
Landscape Architecture
Maintenance Engineering Management
Materials Science Engineering
Mechanical Engineering
Mechatronic Engineering
Military Engineering
Mining Engineering
Occupational Safety & Health
Petroleum & Natural Gas Engineering
Petroleum & Natural Gas Production
Process Instrumentation Technology
R & D Research & Development
Renewable Energies
Robotics & Automation
Structural Engineering
Sustainable Architecture
Technological Management
Telecommunication Engineering
Urban Planning & Design

Faculty of Life & Earth Sciences



Astronomy
Biochemistry
Biology & Life Science
Botany & Plant Science
Chemistry
Earth Science
Ecology
Environmental Health
Ethology
Fire Science
Forestry
Genetics
Geography & Cartography
Geology
Human Animal Studies
Livestock & Animal Science
Marine Science
Mathematics
Meteorology
Microbiology & Immunology
Molecular Cell Biology
Optics
Physics
Pure Sciences
Soil Science
Statistics
Sustainable Agriculture
Wood Science
Zoology



Faculty of Psychology

Addictive Behavior
Animal Assisted Therapy
Clinical Psychology
Coaching & Leadership
Cognitive Psychology
Counseling Psychology
Criminology
General Psychology
Gestalt Therapy
Holistic Integral Therapy
Hypnotherapy
Neural & Brain Science
NLP Neuro Linguistic Programming
Organizational Psychology
Parapsychology
Personal Growth Techniques
Psychosomatic Therapy
Psychotherapy
Sexology
Social Psychology
Social Work
Soul Therapy
Transpersonal Psychology

Faculty of Physical Education



Research Methodology and Techniques
Review of Literature
Data Collection Methods
History and Principles of Physical Education
History of Physical Education in ancient Greece
Qualification of Physique
Dissertation

Faculty of Hindi



Research Methodology: Research design, data collection, data analysis

Hindi Literature and Language: Poetry, drama, fiction, and criticism

Electives: Hindi drama, Hindi fiction, Hindi poetry

Dissertation: Original research work

Faculty of Commerce



Research Methodology
Financial Management
Marketing Management
Microeconomics and Macroeconomics
Quantitative Techniques
Organizational Behavior
Contemporary Research in Accounting
Contemporary Management Theory
Capital Market Theories
Classical Management Theory
Accounting Theory
Theory of Entrepreneurship
Basic Economic Concepts

Available Postdoctoral Programs at AIU

- Post-doctoral Certificate of Professorship
- Postdoctoral Program in Adult Education
- Post-doctoral Program in Special Education
- Post-doctoral Program in Administration and Global Economy
- Post-doctoral Program in Administration and Economics
- Post-doctoral Program in Agriculture Engineering
- Post-doctoral Program in Anthropology
- Post-doctoral Program in Biochemistry and Molecular Biology
- Post-doctoral Program in Bioethics
- Post-doctoral Program in Biostatistics
- Post-doctoral Program in Business and Economics Management
- Post-doctoral Program in Clinical Investigation
- Post-doctoral Program in Cognitive Neuroscience Applied to Education
- Post-doctorate Program in Cognitive Psychology
- Post-doctoral Program in Cultural Translation
- Post-doctoral Program in Democracy Studies
- Post-doctoral Program in Education with an emphasis in Leadership, Innovation and Educational Quality
- Post-doctoral Program in Environmental Auditing and Management
- Post-doctoral Program in Environmental Health and Engineering
- Post-doctoral Program in Epidemiology and Clinical Research
- Post-doctoral Program in Finance
- Post-doctoral Program in Higher Education
- Post-doctoral Program in Higher Education Administration
- Post-doctoral Program in Higher Education with Specialization in Curriculum
- Post-doctoral Program in Health Behavior and Society
- Post-doctoral Program in Health Policy and Management
- Post-doctoral Program in Health Systems
- Post-doctoral Program in History
- Post-doctoral Program in History of Science and Related Studies
- Post-doctoral Program in Human Systems Consulting
- Post-doctoral Program in Information and Communication Technology
- Post-doctoral Program in International Higher Education
- Post-doctoral Program in Management
- Post-doctoral program in Mental Health
- Post-doctoral Program in Natural Health Sciences
- Post-doctoral Program in Neuroscience of Cognitive Processes Applied to Research
- Post-doctoral Program in Organizational Leadership and Management
- Post-doctoral Program in Public Health
- Post-doctoral Program in Philosophy
- Post-doctoral Program in Physical Education and Health
- Post-doctoral Program in Public Administration
- Post-doctoral Program in Public Health With an Emphasis in Epidemiology and Research
- Post-doctoral Program in Public Health With an Emphasis in Public Policy



Available Postdoctoral Programs at AIU

- Post-doctoral Program in Prospective Technology
- Post-doctoral Program in Law
- Post-doctoral Program in Modern Letters
- Post-doctoral Program in Linguistics
- Post-doctoral Program in Logistics and Supply Chain Management
- Post-doctoral Program in Multidisciplinary Studies
- Post-doctoral Program in Quality Management
- Post-doctoral Program in Research Methodology
- Post-doctoral Program in Scientific Professional Competencies
- Post-doctoral Program in Strategic Management
- Post-doctoral Program in Strategic Planning and Strategic Management
- Post-doctoral Program in Technological Management and Innovation

PROGRAM TUITION & SPECIAL ENROLLMENT

At Angel's International University, we are committed to making high-quality, global education accessible to working professionals worldwide. We offer a transparent fee structure designed to provide maximum value for your professional investment.

- **Standard Tuition: \$3,000**
- **Special Discout Cost: \$1,700 (Total Cost)**



Postdoctoral Admission Requirements

Angel's International University (AIU) offers 100% online postdoctoral programs for international scholars. To ensure academic excellence, candidates must meet the following requirements:

- **Academic Degrees:** Must hold a Bachelor's, Master's, and Doctorate from recognized institutions.
- **Professional Background:** An established career in research or university teaching, preferably with prior publications.
- **Digital Autonomy:** Proficiency in self-regulated learning, rigorous research habits, and advanced digital tool usage.
- **Technical Setup:** Access to a high-performance computer capable of managing advanced research applications and data storage.



ACCREDITATION AND PROFESSIONAL RECOGNITION

At Angel International University, we maintain a transparent approach to accreditation. Our validation process is non-governmental and discretionary, a common standard for international distance education institutions. Like many prestigious private universities, we seek accreditation through specialized professional and regional associations.

Currently, there are no universal, worldwide accreditation standards for distance learning. Each accrediting body performs an independent, comprehensive assessment and grants accreditation based on its specific rigorous criteria.

The Utility of Your Degree

An Angel International University degree is a powerful tool for career advancement, providing access to a wide range of professional opportunities and global roles. However, it is important to note that certain regulated professions or government-specific positions may require diplomas from state-accredited institutions. We encourage all prospective students to verify the specific requirements for their intended career path and country before enrolling.

Expertise Over Credentials

In the modern professional landscape, reputation is built on tangible skills and competency. While a degree serves as a formal representation of your achievement, employers today place the highest value on your actual knowledge and expertise. For most multinational companies, NGOs, and private employers, completing a rigorous distance learning program demonstrates the level of discipline and self-management they desire in top-tier candidates.

ACCREDITATION EXCELLENCE: ANGEL INTERNATIONAL UNIVERSITY IS ACCREDITED BY THE IACU (International Association of Colleges & Universities)

Angel International University is globally accredited by the **International Association of Colleges & Universities (IACU)**. This accreditation was granted following a rigorous review and validation of our study programs to ensure they meet high international standards.

The IACU evaluates several key benchmarks, including:

- Curriculum Quality: Assessment of program depth and academic rigor.
- Professional Relevance: Alignment of degree titles with global career development.
- Institutional Integrity: Verification of faculty expertise and operational transparency.

By meeting these stringent criteria, Angel International University ensures its distance education programs provide a high-quality, professional credential respected by private and international bodies worldwide.



Post Doctor of Professional Studies Certification Sample



ANGEL'S
INTERNATIONAL UNIVERSITY
BE THE BEST VERSION OF YOURSELF

Angel's International University

This is to certify that, upon the recommendation of the Faculty and by the authority vested in them, the Directors of Angel's International University hereby confer

Your Name

The degree of

Post Doctor of Philosophy in Education

With all the rights, privileges and Honors thereto appertaining
In witness whereof, we have caused this document to be issued under the official seal of the university and signed by the authorized officer in India

Dr. Rishikesh Tewari
President & Chief Academic Officer

Registrar
AM



Post Doctor of Professional Studies Transcript sample

Angel's International University



Official Transcript

THE AIU GRADING SYSTEM

To earn any AIU credits a grade of E (2.0-50%) or higher is required

- A 4.0 - Excellent (91-99%)
- B 3.5 - Very Good (81-90%)
- C 3.0 - Good (71-80%)
- D 2.5 - Satisfactory (61-70%)
- E 2.0 - Sufficient (51-60%)
- F 1.5 Fail (<50%)

ACADEMIC YEAR 2021/2022
MARCH, 25 2022

Registration Code:

SOURCES OF AIU CREDITS:

*PR.ED Code Credits: Transferred from documented previous education
*APEL Code Credits: Accreditation of prior experiential learning

- 001 = General Educational courses
- 002 = Specific Educational
- 003 = Bachelor's Specialist & Expert
- 004 = Bachelor's courses
- 005 = Master's courses
- 006 = Master's & Doctorate courses
- 007 = Doctorate courses
- 008 = Thesis

1 AIU CREDIT = 1 USA Semester Credit
= 15 hours of notional learning
= 30 hours of study or working
1 AIU CREDIT = 2 ECTS Credits

Name:

Nationality:

Birth Date:

Degree	Major / Minor	Graduation Date
Post Doctor Of Philosophy	Education	March,25 2022

Faculty of Business & Media

DEGREE CREDITS **120** ECTS Equivalent **240**

Undergraduate: **120** +Postgraduate **00** AIU Credits **120** Grade Point Average **4.05**
APEL Credits: **90** Academic Credits **30** Accumulated **120**

Approval Thesis Date	CIC	Bachelor Program	Academic Credits	Grade
	APEL	Examination Units validated by APEL max (Accreditation Prior Experiential Credits)	90	
		Academic Assessment of Final Dissertation		
28/02/2026	008	Final Dissertation (Thesis): title		
		• Candidate's contribution to the research	2	4.0
		• Formulation and motivation of the research problem	2	3.8
		• Research structure	2	3.8
		• Research methodology	3	3.8
		• Scientific, social and practical relevance of research	4	3.9
		• Field of research, knowledge and use of literature	4	4.0
		• Consistency, stylistic and linguistic form of presentation	6	3.8
		• Scientific relevance of research results	7	3.9
		Total Credits	120	

President & Chief Academic Officer

Registrar AIU